

HOT SHEET

**PERDUE**



# FULLY COOKED SAVORY WINGS

CBI#230075 MEDIUM 2/5 LB

CBI#230014 JUMBO 2/5 LB

**FROM FROZEN** OVEN 350 DEGREES 12-15MIN, **FROM THAWED** 8-10MIN, UNTIL INTERNAL TEMP REACHES 165. **FRY** 350 DEGREES FOR 6-8 MIN, **FROM THAW** 4-6, MIN OR UNTIL INTERNAL TEMP REACHES 165 DEGREES

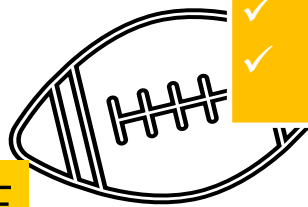


all DCS

- ✓ FULLY COOKED
- ✓ SHORT COOK TIME
- ✓ CONSISTENT FLAVOR
- ✓ NO CROSS CONTAMINATION

*Available Today!*

ARE YOU READY FOR SOME **FOOTBALL?!**



## MAHI NUGGETS

CBI#10132262 2/5lb  
1-2 oz Skinless, Boneless & Light Panko Breading

*Wild Caught!*



Frozen, Skinless, Boneless, Well Trimmed & Breaded (30%)

Deep Fry, 350 degrees Fahrenheit until golden brown, about 3-4 minutes.

RVB | PG



## READY TO SLICE JUST THE WAY YOU LIKE!

Two Vacuum Packed Half Slabs  
10-12 lbs./per case

CHENEY #10132173

## APPLEWOOD SMOKED PORK BELLY/SLAB BACON



RVB | PG  
STATESVILLE





CHENEY BROTHERS ESTATE

# PINEAPPLE JUICE

**NEW**

**100%  
PINEAPPLE JUICE**

CBI#10130353  
48/6 OZ

CBI#10129926  
12/46 OZ

**PINEAPPLE JUICE  
FROM CONCENTRATE**

CBI#10130239  
48/6 OZ

CBI#10130115  
12/46 OZ



RIPE  
BRIGHT  
MATURE  
Quality  
Juice!

Shelf Stable-2 year shelf life  
Perfect for Cocktails, Punch,  
Smoothies, Cooking + More!



**PREMIUM PINEAPPLE  
SLICES | TIDBITS | DICED  
CHUNKS | CRUSHED**



- |          |                                       |          |
|----------|---------------------------------------|----------|
| 10130366 | PINEAPPLE SLICES IN JUICE             | 12/20 OZ |
| 10130367 | PINEAPPLE TIDBITS IN JUICE            | 12/20 OZ |
| 10130368 | PINEAPPLE COARSE CUT CRUSHED IN JUICE | 6/# 10   |
| 10130369 | PINEAPPLE SLICES IN JUICE 66 CT       | 6/# 10   |
| 10130371 | PINEAPPLE TIDBITS IN JUICE            | 6/# 10   |
| 10130372 | PINEAPPLE CHUNKS HEAVY SYRUP          | 6/# 10   |



## CBI FRESH BURGERS

**MANY SIZES AVAILABLE**

**24 DAY SHELF LIFE FROM PACK DATE-(LONGEST IN INDUSTRY!)**

- ✓ **USDA PRIME**
- ✓ **ANGUS CHUCK & BRISKET BLEND**
- ✓ **ANGUS CHUCK**
- ✓ **ANGUS STEAKBURGER**
- ✓ **GROUND BEEF 80/20**
- ✓ **GROUND BEEF 75/25**



CHECK OUT OUR ITEMS

CBI# 10134992 6/32oz



# FOODSERVICE SPRAY

Send a Signal You Care with The PURELL SOLUTION

Surface Sanitizer Comparison				
	PURELL® Foodservice Surface Sanitizer	Eco-Lab Oasis 146 Multi-Quat Sanitizer*	Lysol® All Purpose Cleaner	Clorox® Cleanup
Disinfects Bacteria and Viruses in as little as 30 Seconds	✓	✗ 10 Minute	✗ 2 Minute	✓
Meets EPA 60-second sanitization requirement for Food-Contact Surfaces	✓	✓	✗	✗
EPA Toxicity Rating	✓ CATEGORY IV: No Precautionary Statements Required	✗ AS SHIPPED: CATEGORY I: DANGER AS DILUTED: SDS states "Serious Eye Damage, Eye Irritation"	✗ CATEGORY II: WARNING	✗ CATEGORY II: WARNING
EPA Design for the Environment Certification	✓	✗	✗	✗

## FRONT & BACK OF THE HOUSE!

- ✓ Kills 99.9% of bacteria and viruses on surfaces, including norovirus, E. coli, and Salmonella.
- ✓ No rinse required on food-contact surfaces
- ✓ No handwashing, gloves, or protective eyewear required.



AVAILABLE IN FLOWPACK AS WELL!

CBI# 10135010 12pks/CS (72ct)

CBI #711401  
MOPHEAD  
GREASEBEATER  
BLENDED  
1/1CT

National Floor Safety Institute  
Certified to reduce slipping.

The patented Grease-Beater™ technology allows mop fibers to **absorb almost twice as much** grease and oil compared to conventional mops. In addition; the mop is designed to release grease by a simple wringing action, minimizing floor re-soiling when mopping .



*This mophead lasts for about 75 uses, compared to other mopheads that only last a few usages. Cut-end mopheads last 3-5 uses and looped-end mopheads last 30-50 uses.*

THE PRICE IS RIGHT  
EVERYTIME!

CBI# 10129765  
CUTLERY KIT HVY BLK  
K/F/S/N/S&P - PP  
1/250CT VINTAGE

AXIS

