



Schreiber was founded in 1945 when L.D. Schreiber, a butter and egg businessman from Chicago, partnered with Merlin G. Bush and Daniel David Nusbaum to form the L.D. Schreiber Cheese Company in Green Bay, Wisconsin. From day one, the company followed the “16 ounces to the pound” philosophy. One pound of cheese would weigh just that – one pound. Not more. Not less. Back in 1945, that wasn’t always the case with other companies, but being honest and trustworthy was important to our founders.

They were right, and today we still use “16 ounces to the pound” as shorthand for two cornerstones of our character: unquestionable integrity and an ongoing commitment to quality. While we’ve grown in size and capabilities in the past seven decades, our values are the same, and we don’t intend to change.

*Process cheese is made from natural cheeses that are blended with other ingredients and pasteurized. This creates a smooth, consistent, flavorful cheese that’s ideal for sauces and cooking. American cheese is the most popular and is known for its perfect melt on cheeseburgers and in grilled-cheese sandwiches.*

- 164006 Duck Deli American Cheese Yellow Sliced 120 ct 4/5# RPOGS
- 10064173 Schreiber American Cheese Yellow 160 ct 4/5# RPOGS
- 10053422 Schreiber American Cheese Yellow Sharp 200 ct 4/5# GS
- 10062081 Duck Deli American Cheese White 120 ct 4/5# RPOGS
- 164025 Tate American Swiss White 120 ct 4/5# R
- 10064478 Schreiber American Swiss White 160 ct 4/5# RPO



*Cream cheese is a fresh, natural cheese that can be used as a spread or dip, as well as in sweet or savory dishes. Smooth and creamy, its primary ingredient is cream rather than milk. A starter culture is added to the milk and cream. This causes it to ferment and creates cream cheese’s unique texture and flavor.*



- 170025 Raskas Cream Cheese 30# ROP
- 170011 Raskas Cream Cheese 4/3# ROPSG
- 170014 Raskas Cream Cheese Light 4/3# RG
- 170016 Raskas Cream Cheese Whipped 4/3# RP
- 170050 Raskas Cream Cheese Portion Cups 100/1 oz ROP
- 10108364 Raskas Strawberry Cream Cheese Portion Cups 100/0.75 oz S

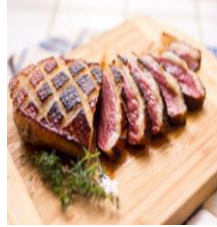


Joe Jurgielewicz & Son have been providing customers with the finest quality ducks for over 20 years--On 500 Acres of Rolling Pennsylvania Farmland (Shartlesville) Amish Country! **Dr. Joe Jurgielewicz, Veterinarian – Owner/Operator.** Vertically Integrated from start to finish! “Grow-Out” on local Corn & Soybean diet w/ mineral rich Deep Water-Well! Beautiful Fat-to-Lean ratio & Skin Quality!

**REMINDER**

**“Nothing but the best will do”- Joe Jurgielewicz NO ADDED WATER!!**

<b>10068236</b>	<b>Duck Breast Boneless Skin On Pekin Double Lobe</b>	<b>6/2 ct</b>	<b>O</b>
<b>10056693</b>	<b>Duck Breast Boneless Skin On Double Lobe</b>	<b>10/18-20 oz</b>	<b>S</b>
<b>10113452</b>	<b>Duck Breast 6-7 oz Skin On Single 24 Per Cs</b>	<b>1/10# avg</b>	<b>RO</b>
<b>10113456</b>	<b>Duck Breast 7-9 oz Skin On Single 24 Per Cs</b>	<b>1/10# avg</b>	<b>RO</b>
<b>10113460</b>	<b>Duck Breast 8-10 oz Skin On Single 20 Per Cs</b>	<b>1/11# avg</b>	<b>RO</b>
<b>10056697</b>	<b>Duck Breast 8-12 oz Boneless Single Skin On</b>	<b>24/8-12 oz</b>	<b>S</b>



All our boneless Duck Breasts are hand-cut and trimmed by our butchers. These breasts are the meatiest part of the duck, a great alternative entree to steak, chicken or lamb. Breast can be pan-seared, broiled or baked. Selectively bred for the perfect fat to meat ratio. Fresh duck breast from our farm to your table!

**What's NEW from Coast to Coast?**

**10044728 Tio Jorge Yuca Cups 12/12 ct RO**

Great appetizer cups! Use your favorite filling to make a signature appetizer.



**10113909 Tio Jorge Yuca Cheese Bites 5/2# S**

Tasty Yuca Cheese Bites make a great appetizer or side dish. Best deep fried.



**10082786 CBI Vinegar Apple Cider 5% 4/1 gal G**

Perfect for Sauces, salad dressings, canning and pickling. 40 grain, 5% acidity.



**R-Riviera Beach; O-Ocala; P-Punta Gorda; G-Goldsboro; S-Statesville**

**Did you know.....?**

- ❖ No relationship is ever a waste of your time. If it didn't bring you what you want, it taught you what you didn't want.
- ❖ At the 1936 Olympic games, competitors from Liechtenstein were shocked to discover their flag was the exact same as Haiti's. Liechtenstein added a crown to their flag a year later.
- ❖ “She sells seashells by the seashore” was written about a female paleontologist from the 1800's. She actually sold dinosaur bones and fossilized shells.
- ❖ Another term for your nieces or nephews would be “nibblings”.
- ❖ Iceland has a dating app that stops you hooking up with your cousin.
- ❖ Eye of newt, toe of frog, and wool of bat are just archaic terms for mustard seed, buttercup, and holly leaves.

© Randy Glasbergen  
glasbergen.com



“Grandma says it's important to use the proper fork when you eat in a restaurant. What's a fork?”



**REMEMBER TO BOOK YOUR HOLIDAY TURKEYS! DON'T MAKE YOUR CUSTOMER ORDER PIZZA!**

**For more information or samples, please contact your local Coast to Coast representative. We look forward to speaking with you!**

 Seasons  
Greetings



Food Brokers  
**COAST TO COAST**

*"See your table take shape this holiday season."*

## *Belgium Butter, Nut & Candy*

### *Holiday Butter*



*"Belgium Butter, Nut & Candy's sculpted butter is a great way to enhance your table setting this holiday season and will be a great conversation piece your guests will rave about!"*

Case Pack: 12 x 4 oz each

**CBI # 10072398 Butter Turkey**

***Order By November 3th***

**CBI # 10072397 Butter Christmas Tree**

***Order By December 1st***

**FLORIDA WAREHOUSES**

**Seasons  
Greetings**



*"See your table take shape this holiday season."*

## *Belgium Butter, Nut & Candy*

### *Holiday Butter*



*"Belgium Butter, Nut & Candy's sculpted butter is a great way to enhance your table setting this holiday season and will be a great conversation piece your guests will rave about!"*

Case Pack: 12 x 4 oz each

**CBI # 10072398 Butter Turkey**

**Order By October 27th**

**CBI # 10072397 Butter Christmas Tree**

**Order By November 24th**

**NORTH CAROLINA WAREHOUSES**